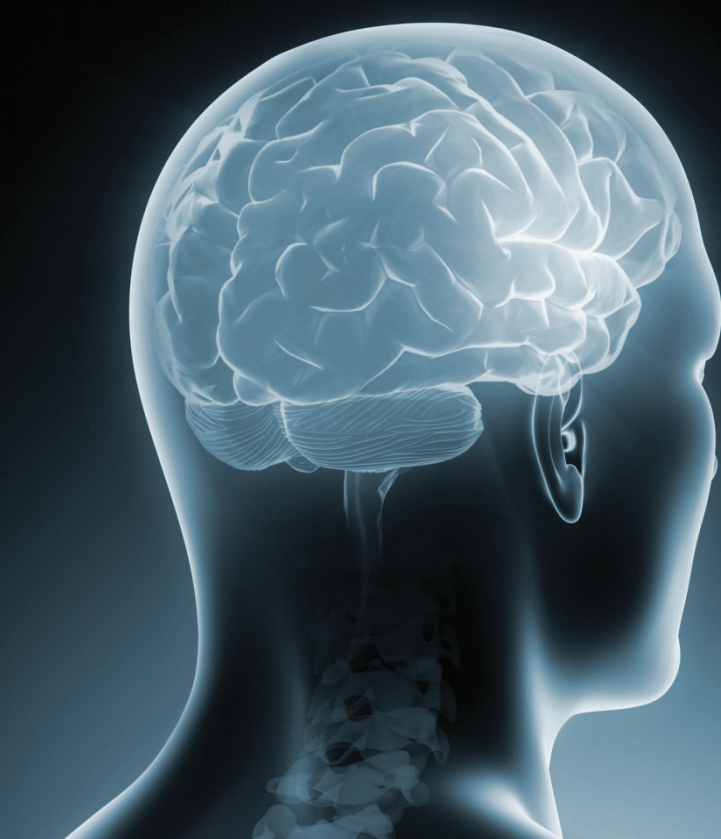


PRESENTED BY THE OHIO STATE UNIVERSITY WEXNER MEDICAL CENTER



Essentials of Neurocritical Care: Translating Research to Clinical Practice

MAY 30 - 31, 2017

The Ohio Union at The Ohio State University

1739 N. High Street

Columbus, OH 43210



THE OHIO STATE UNIVERSITY

WEXNER MEDICAL CENTER

To register, visit go.osu.edu/neurocriticalcme

Essentials of Neurocritical Care: Translating Research to Clinical Practice

Please join neurovascular and neurocritical care subspecialists from The Ohio State University Wexner Medical Center to learn the latest advances in the diagnosis and treatment in neurocritical care.

MAY 30 - 31, 2017

The Ohio Union at The Ohio State University
1739 N. High Street
Columbus, OH 43210



THE OHIO STATE UNIVERSITY
WEXNER MEDICAL CENTER

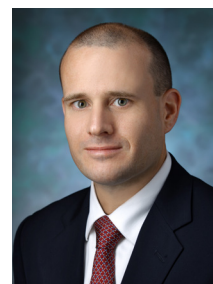
Guest Speakers



KEYNOTE SPEAKER

MARY KAY BADER, RN, MSN, CCNS

Clinical Nurse Specialist, Neuroscience/Critical Care
Mission Hospital, Mission Viejo, California



JOHN LEWIN III, PHARM.D, MBA, BCCCP

Division Director, Critical Care and Surgery Pharmacy,
Johns Hopkins Hospital
Associate Professor of Anesthesiology and Critical
Care Medicine, Johns Hopkins University School of
Medicine, Baltimore, Maryland



KEYNOTE SPEAKER

LORI SHUTTER, MD, FCCM, FNCS

Professor of Critical Care Medicine, Neurology,
Neurosurgery and Clinical and Translational Science
University of Pittsburgh School of Medicine, Pittsburgh,
Pennsylvania

Day One: Tuesday, May 30

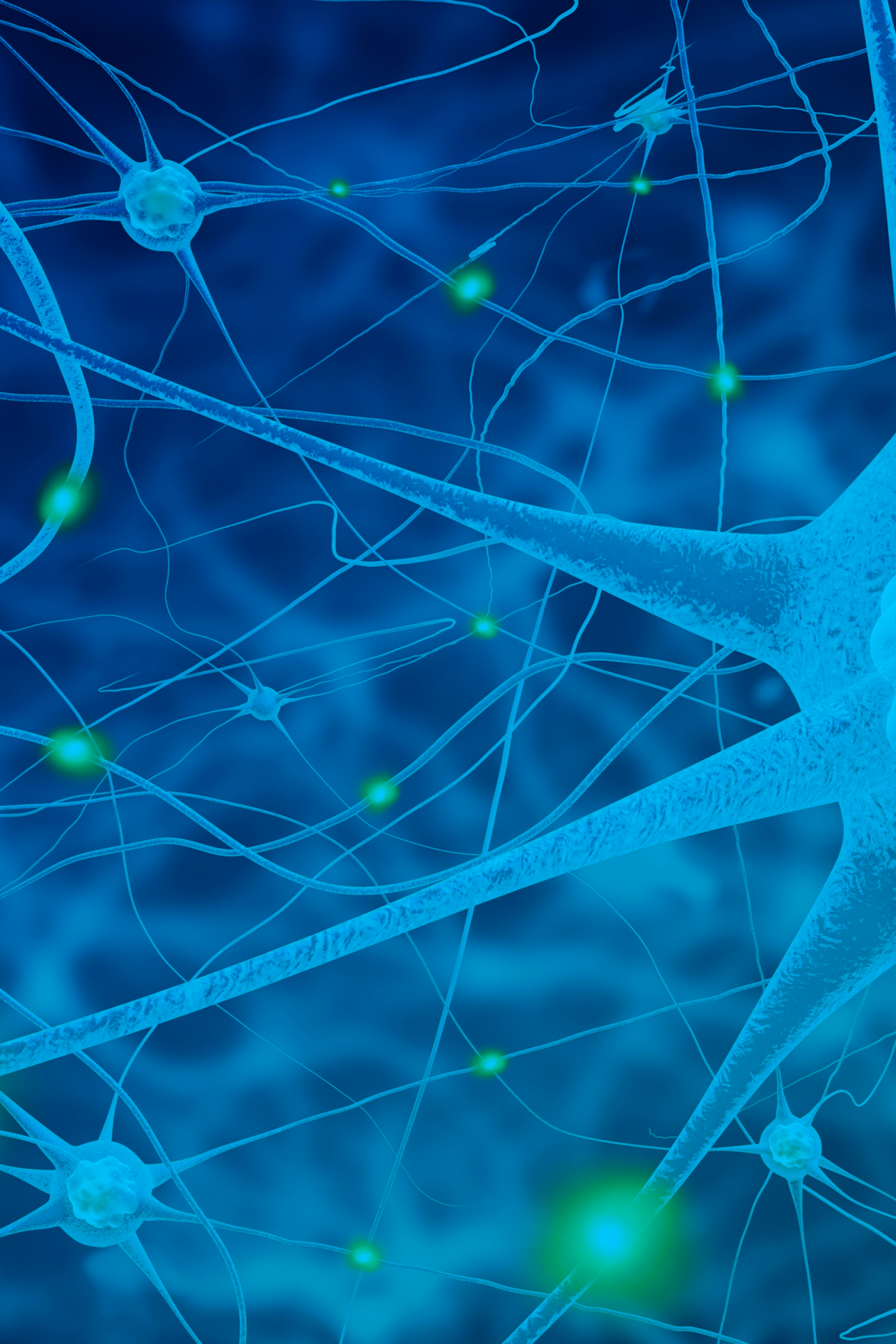
- **Keynote presentation: Update in the Management of Traumatic Brain Injury** by **Lori Shutter, MD, FCCM, FNCS**, professor and division chief of Neurocritical Care at the University of Pittsburgh Medical Center
- The day will consist of several **concurrent sessions** focusing on integrating cutting-edge research into practical application for neurocritical care. Topic highlights include:
 - **Research updates and management of critical neurological conditions, including intracerebral hemorrhages, subarachnoid hemorrhages, traumatic brain injuries and spinal cord injuries**
 - **Application and review of radiologic modalities for common neurocritical diagnoses**
 - **Practical techniques for early mobility, swallowing and communication**
 - **Management of central nervous system infections and neurological rehabilitation**
 - **Pain management and palliative care**

Day Two: Wednesday, May 31

- **Keynote presentation: Thromboelastography and Its Impact in the Neuro ICU** by **Mary Kay Bader, RN, MSN, CCNS**, critical care nurse specialist and educator at Mission Hospital
- Morning sessions offer didactic instruction focusing on neurocritical care and acute neurological emergencies, including **case reviews of common imaging findings in neurocritical care patients, the role of interventional therapy for acute ischemic strokes and common ICU drugs and the associated seizure risks**
- Afternoon session will feature **interactive simulation workshops** designed to train individuals in the application, interpretation and management of various neurological emergency scenarios
- Supplemental instruction for **Emergency Neurological Life Support (ENLS) Certification**
- Designed to help healthcare professionals improve patient care and outcomes during the critical first hours of a patient's neurological emergency
- Live presentations are certified for **AMA PRA Category 1 Credit™** and function as preparatory instruction for the online enduring material modules on the Neurocritical Care Society website
- You can earn additional **AMA PRA Category 1 Credit™** with successful completion of the online modules

Tuesday, May 30

- | | |
|-------------------|--|
| 7 a.m. | Registration and Continental Breakfast |
| 7:30 a.m. | Welcome and Pretest Evaluation |
| 8 a.m. | Morning Keynote: Update in the Management of Traumatic Brain Injury <i>Lori Shutter, MD, FCCM, FNCS</i> Professor of Critical Care Medicine, Neurology, Neurosurgery and Clinical and Translational Science, University of Pittsburgh School of Medicine |
| 9 a.m. | Concurrent Session #1 A – Subarachnoid Hemorrhage* Overview and Medical Management <i>Michel Torbey, MD, MPH, FNCS</i> Surgical Management of Subarachnoid Hemorrhage <i>Patrick Youssef, MD</i> B – Spinal Cord Injury/Osmotherapy Spinal Cord Injury <i>Stephanus Viljoen, MD</i> Osmotherapy in Neuro ICU <i>Keaton Smetana, PharmD, BCCCP</i> |
| 10:30 a.m. | Break and Exhibits |
| 10:45 a.m. | Concurrent Session #2 A – Intracerebral Hemorrhage* Management of Intracerebral Hemorrhage <i>Vivien Lee, MD</i> Reversal of Antithrombotics: Anticoagulant and Antiplatelet Agents <i>Diana Greene-Chandos, MD</i> B – Central Nervous System (CNS) Infections Meningitis, Encephalitis, Spinal Cord Infections <i>Mark Lustberg, MD</i> Management of CNS Infections with a Focus on Intrathecal Management <i>John Lewin III, PharmD, MBA, BCCCP</i> Division Director, Critical Care and Surgery Pharmacy, Johns Hopkins Hospital; Associate Professor of Anesthesiology and Critical Care Medicine, Johns Hopkins University School of Medicine |



12:15 p.m.

Lunch and Exhibits

Poster Categories:

- Educational
- Research
- Clinical

Winner of each poster category will be awarded registration to a national conference of their choice (up to \$500).

1:30 p.m.

Concurrent Session #3

A – Mechanical Ventilation/Sedation

Ventilator Management/Sedation in the Neuro ICU

Yousef Hannawi, MD; Tim Dunlea, RT

Timing of Tracheostomy in ICU

Bryan Gough, MD

B – Neuro Rehabilitation

Knowledge Translation: Early Mobilization of Patients in the Neuro ICU

Amelia Siles, PT, DPT, NCS; Kevin Patterson, PT, MS; Sarah Shatto, MS, OTR/L; Michele Weber, DNP, RN, CCRN

The Role of Speech Language Pathology in Neurocritical Care

Nicole Wiksten, MS, CCC-SLP, BCS-S; Terri Mavrakakis, MA, CCC-SLP

3 p.m.

Break and Exhibits

3:15 p.m.

Concurrent Session #4

A – CNS Tumors/Pain Management

Postoperative Critical Care for Brain Tumor Patients

Douglas A. Hardesty, MD

Neuroimaging Brain and Spinal Cord Tumors

Joel Fritz, MD

Management of Postoperative Pain

Shraddha Mainali, MD

B – Role of Palliative Care in Neuro ICU/Organ Donation

Palliative Care in Neuro ICU

Sarah Everhart MS, RN, ACNP-BC

Kavitha P. Norton, DO

Eligibility and Timing of Organ Donation

Mindy Zoll, RN, CPTC

4:45 p.m.

Post-Test Evaluation and Conclusion

5 p.m.

Adjourn

Wednesday, May 31

| | |
|------------|--|
| 7 a.m. | Registration and Continental Breakfast |
| 7:30 a.m. | Welcome and Pretest Evaluation |
| 8 a.m. | Morning Keynote: Thromboelastography and Its Impact in the Neuro ICU <i>Mary Kay Bader, RN, MSN, CCNS</i> Clinical Nurse Specialist, Neuroscience/Critical Care, Mission Hospital |
| 9 a.m. | Neuroimaging: Case Reviews and Recognition of Common Imaging Findings in Neurocritical Care Patients <i>Daniel Boulter, MD</i> |
| 9:45 a.m. | Acute Ischemic Stroke: Role of Interventional Therapy* <i>Shahid Nimjee, MD</i> |
| 10:30 a.m. | Break and Exhibits |
| 10:45 a.m. | Common ICU Drugs and Risk of Seizures <i>Sarah Adriance, PharmD, BCPS</i> |
| 11:30 a.m. | Essentials of EEG interpretation in the ICU/ Status Epilepticus Management <i>William Bell, MD</i> |
| 12:15 p.m. | Post-Test Evaluation |
| 12:30 p.m. | Lunch and Exhibits |
| 1 – 4 p.m. | Concurrent Session Workshops Workshops will be continuous 30-minute simulation sessions. Attendees will be grouped into five to 10 participants per group and rotate through various stations. <ul style="list-style-type: none"> Acute stroke: Large Hemispheric and Basilar Stroke Simulation* <i>Vivien Lee, MD</i> Neuro Imaging: Basics of CT/CTP/CTA and MRI <i>Deepak Gulati, MD</i> Management of Acute Intracranial Pressure (ICP) Crisis <i>Yousef Hannawi, MD</i> Interpretation of EEG in the Neuro ICU <i>William Bell, MD and Jesse Mindel, MD</i> Ultrasound Part I (Focus on ED Ultrasound) <i>Michael Prats, MD and Creagh Boulger, MD</i> Ultrasound Part II (Focus on ICU Ultrasound) <i>John Bennett, PhD, RVT, FICA</i> |

Emergency Neurological Life Support Certification Course

| | |
|-----------|---|
| 1 p.m. | Airway Ventilation Sedation <i>Michel Torbey, MD, MPH, FNCS</i> |
| 1:30 p.m. | Intracranial Hypertension <i>Diana Green-Chandos, MD</i> |
| 2 p.m. | Break and Exhibits |
| 2:15 p.m. | Resuscitation After Cardiac Arrest <i>Noah Grose, BSN, MSN, ACNP-BC</i> |
| 2:45 p.m. | Acute Ischemic Stroke* <i>Noah Grose, BSN, MSN, ACNP-BC</i> |
| 3:15 p.m. | Break and Exhibits |
| 3:30 p.m. | Spinal Cord Compression <i>Susan Yeager, ACNP-BC, CCRN, FNCS</i> |
| 4 p.m. | Acute Non-Traumatic Weakness <i>Susan Yeager, ACNP-BC, CCRN, FNCS</i> |
| 4:30 p.m. | Meningitis/Encephalitis/Pharmacology <i>Archana Hinduja, MD</i> |
| 5 p.m. | Approach to the Comatose Patient <i>Archana Hinduja, MD</i> |
| 5:30 p.m. | How to Take Exam/Distribution of Codes <i>Susan Yeager, ACNP-BC, CCRN, FNCS</i> |
| 5:45 p.m. | Post-Test Evaluation and Conclusion |
| 6 p.m. | Adjourn |

*Indicates session meets criteria for stroke education.

ACCREDITATION STATEMENT

The Ohio State University Center for Continuing Medical Education (CCME) is accredited by the Accreditation Council for Continuing Medical Education (ACCME®) to provide continuing medical education for physicians.

AMA CREDIT DESIGNATION STATEMENT

The Ohio State University Center for Continuing Medical Education (CCME) designates this live activity for a maximum of 16.75 *AMA PRA Category 1 Credit(s)*™. Physicians should only claim credit commensurate with the extent of their participation in the activity.

AMA PRA CATEGORY 1 CREDIT™ BREAKDOWN

Conference Day One (May 30) = 7.75 *AMA PRA Category 1 Credit(s)*™

Conference Day Two (May 31) = 7.75 *AMA PRA Category 1 Credit(s)*™

ENLS Live Instruction = 4.25 *AMA PRA Category 1 Credit(s)*™

If attending the conference but not the ENLS portion of the meeting, learners can earn a maximum of 15.5 *AMA PRA Category 1 Credit(s)*™.

If attending the conference with ENLS (no workshops), learners can earn a maximum of 16.75 *AMA PRA Category 1 Credit(s)*™.

You can earn an additional 15 *AMA PRA Category 1 Credit(s)*™ if you register for the ENLS Certification course and successfully complete the online enduring material modules on the Neurocritical Care Society web portal.

OHIO PHYSICAL THERAPY ASSOCIATION CREDITS

This course will be submitted for Continuing Education Units (CEUs) to the Ohio Physical Therapy Association for physical therapists and physical therapy assistants.

OHIO OCCUPATIONAL THERAPY, PHYSICAL THERAPY, AND ATHLETIC TRAINERS BOARD CREDITS

This course will be submitted for Continuing Education Units (CEUs) to the Occupational Therapy section of the Ohio Occupational Therapy, Physical Therapy, and Athletic Trainers Board for occupational therapists and occupational therapy assistants.

OHIO BOARD OF NURSING CONTINUING EDUCATION

The Ohio State University Wexner Medical Center is an approved provider of continuing nursing education by the Ohio Nurses Association, an accredited approver by the American Nurses Credentialing Center's Commission on Accreditation (OBN-001-91) (OH-057, 2/1/2019).

Please contact Dorina.Harper@osumc.edu for nursing contact hour (APRN Pharm) information.

Registration

Download detailed agendas, view certification information and register at go.osu.edu/neurocriticalcme.

Contact

Lindsay Cowgill
Center for Continuing Medical Education
The Ohio State University Wexner Medical Center
614-293-7397
lindsay.cowgill@osumc.edu

Register at go.osu.edu/neurocriticalcme

Conference Prices

| | Full Conference both days | Conference with ENLS both days | One-Day Reg Day One Only - Tuesday | One-Day Reg Day Two Only - Wednesday | One-Day Registration with ENLS Day Two Only - Wednesday | ENLS Only Wednesday |
|-----------------------------|---------------------------------|--------------------------------------|--|--|--|------------------------|
| Physician | \$300 | \$350 | \$200 | \$100 | \$250 | \$200 |
| Non-Physician | \$200 | \$250 | \$150 | \$100 | \$150 | \$100 |
| Student/ Trainee/ EMS | \$100 | \$100 | \$65 | \$50 | \$100 | \$50 |

Discounted Rates for Ohio State Faculty/Staff and Students/Trainees

| | | |
|----------------------------|-------|-------|
| Physician | \$250 | \$300 |
| Non-Physician | \$150 | \$200 |
| Student/ Trainee EMS | \$50 | \$50 |

Discounts for Ohio State Faculty, Staff and Students are available
If you are a member of the Ohio State faculty and staff or are an Ohio State student attending both days of the conference, you are eligible for a \$50 discount. **ENLS or One-day registrations are not discount eligible.**

If you would like information on how to receive a discounted registration, please contact Lindsay Cowgill at (614) 293-7397 for assistance.

Register at go.osu.edu/neurocriticalcme



THE OHIO STATE UNIVERSITY

WEXNER MEDICAL CENTER

P.O. Box 183101
Columbus, OH 43218-3101

**Essentials of Neurocritical Care:
Translating Research to Clinical
Practice**

MAY 30 - 31, 2017

The Ohio Union at The Ohio State
University

1739 N. High Street
Columbus, OH 43210

Register at go.osu.edu/neurocriticalcme

(include
Presort
First Class
Postage
Mailing
Indicia)